

# HARDFACE CN-O

For Welding Professionals



**The best solution to protect parts against fine particle abrasion**



HARDFACE CN-O is a self shielded flux cored wire, with a high concentration of chromium and niobium carbides in a tough austenitic matrix.

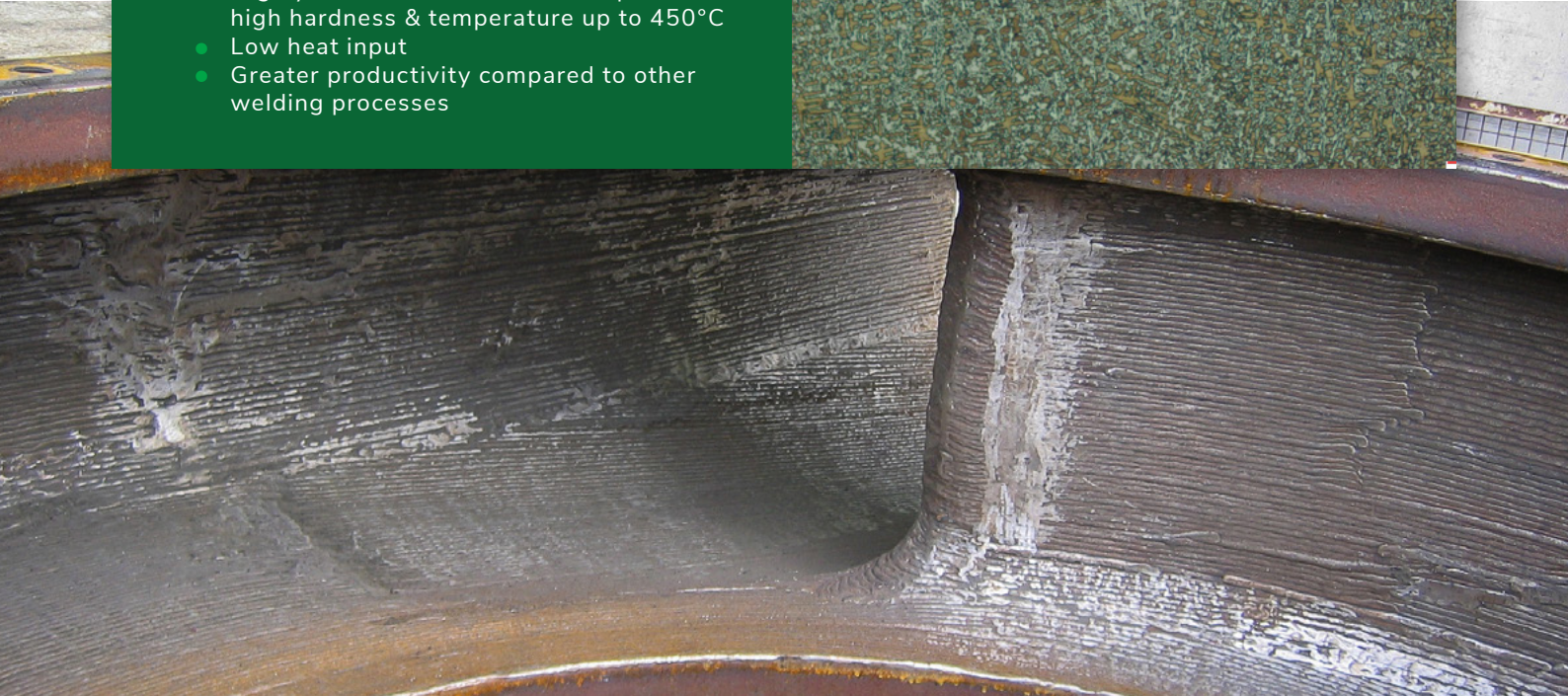
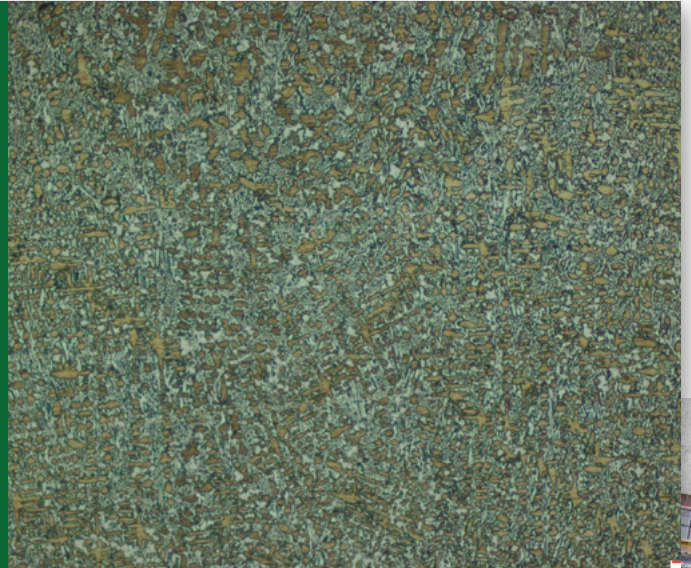
This open-arc flux cored wire is the ideal solution to hardface parts subject to abrasion and moderate impact.

HARDFACE CN-O can easily be used on site, and even under difficult atmospheric conditions; as it can be used without a shielding gas.



## Why choose this solution?

- Semi-automatic, automatic or robotic process
- Combination of hard chromium and niobium carbides in a tough matrix
- Clean surface with stress relief cracks
- Slag free welding deposit allowing outstanding welding performance
- Highly resistant to fine abrasive particles of high hardness & temperature up to 450°C
- Low heat input
- Greater productivity compared to other welding processes



## Product Details

<b>EN ISO Classification:</b>	EN 14700: T Fe15
<b>Available Diameter:</b>	1.6 mm, 2.4 mm, 3.2 mm
<b>Hardness:</b>	62-64 HRC (as welded-3 layers)
<b>Welding Positions:</b>	↙ ↓



[contactus@welding-alloys.com](mailto:contactus@welding-alloys.com)  
[www.welding-alloys.com](http://www.welding-alloys.com)

